

Spare part pictures:

PTO tower mixer *MAMMOTH*

With swivelling mixing tower, height-adjustable stays, mixing rod, propeller stay, cardan shaft, platform und ladder

Type: JRE-TMD

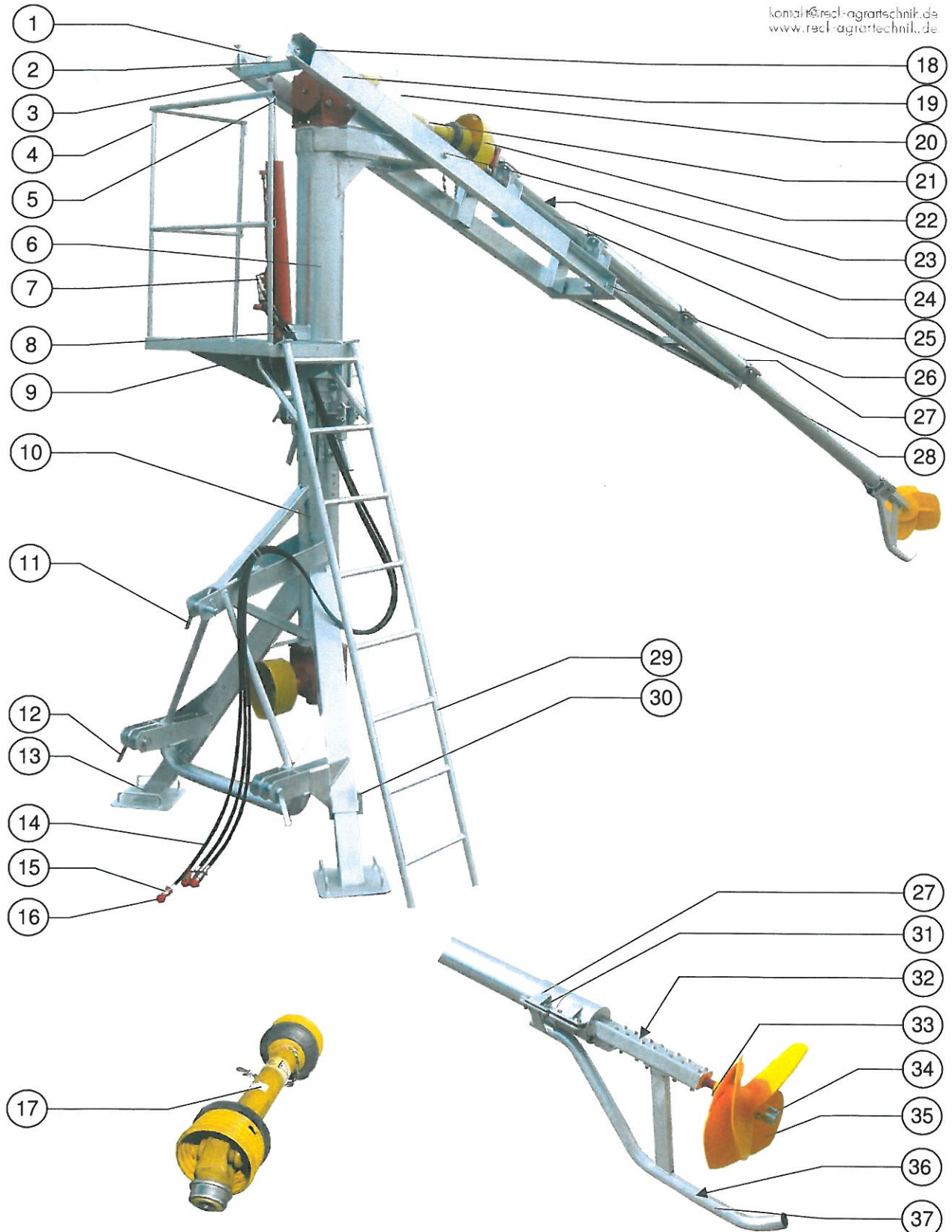
construction year: from 2006

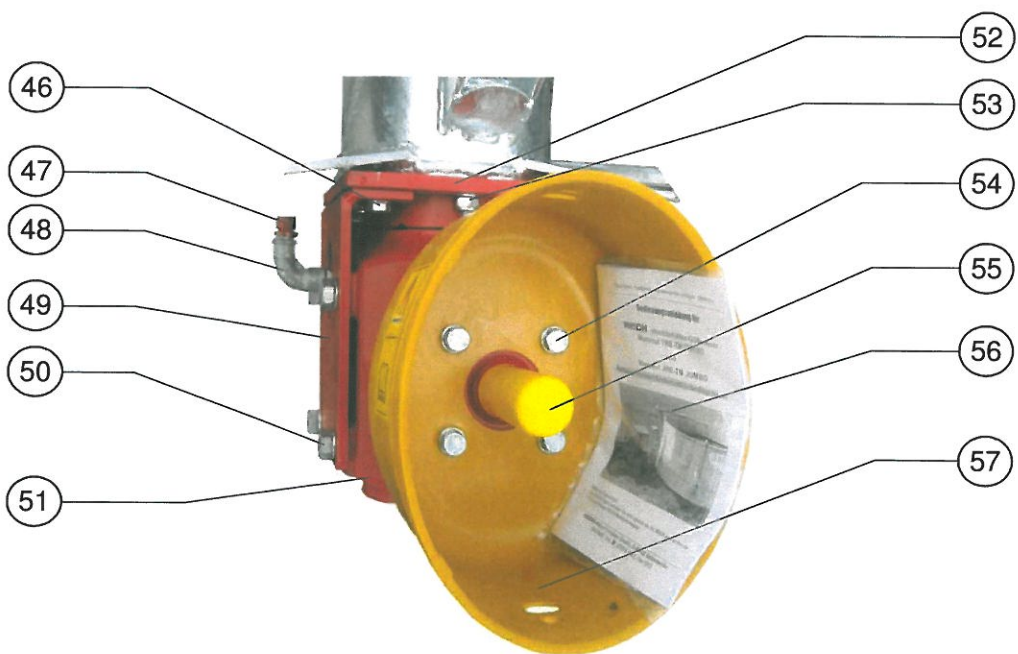
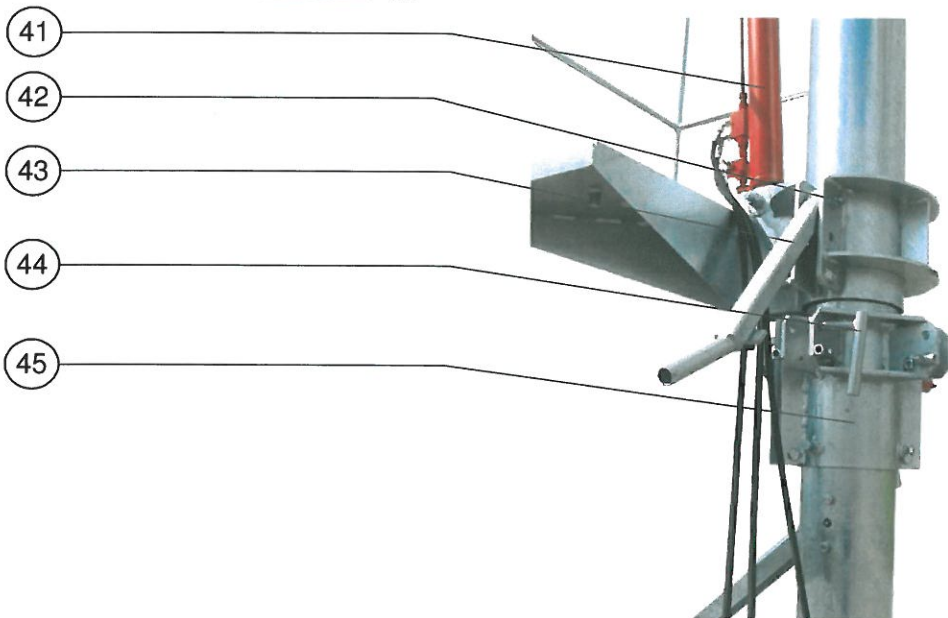
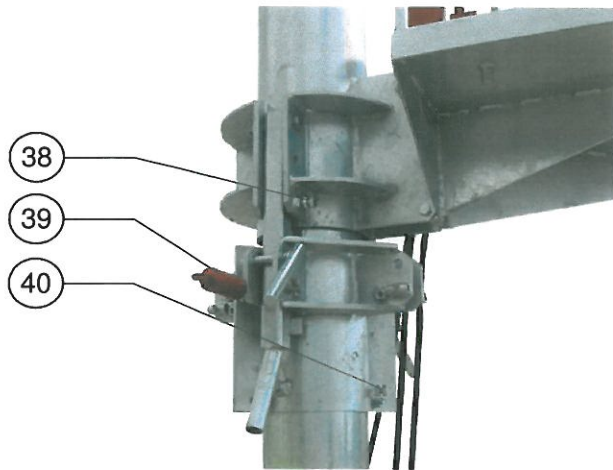
RECK
Agrartechnik

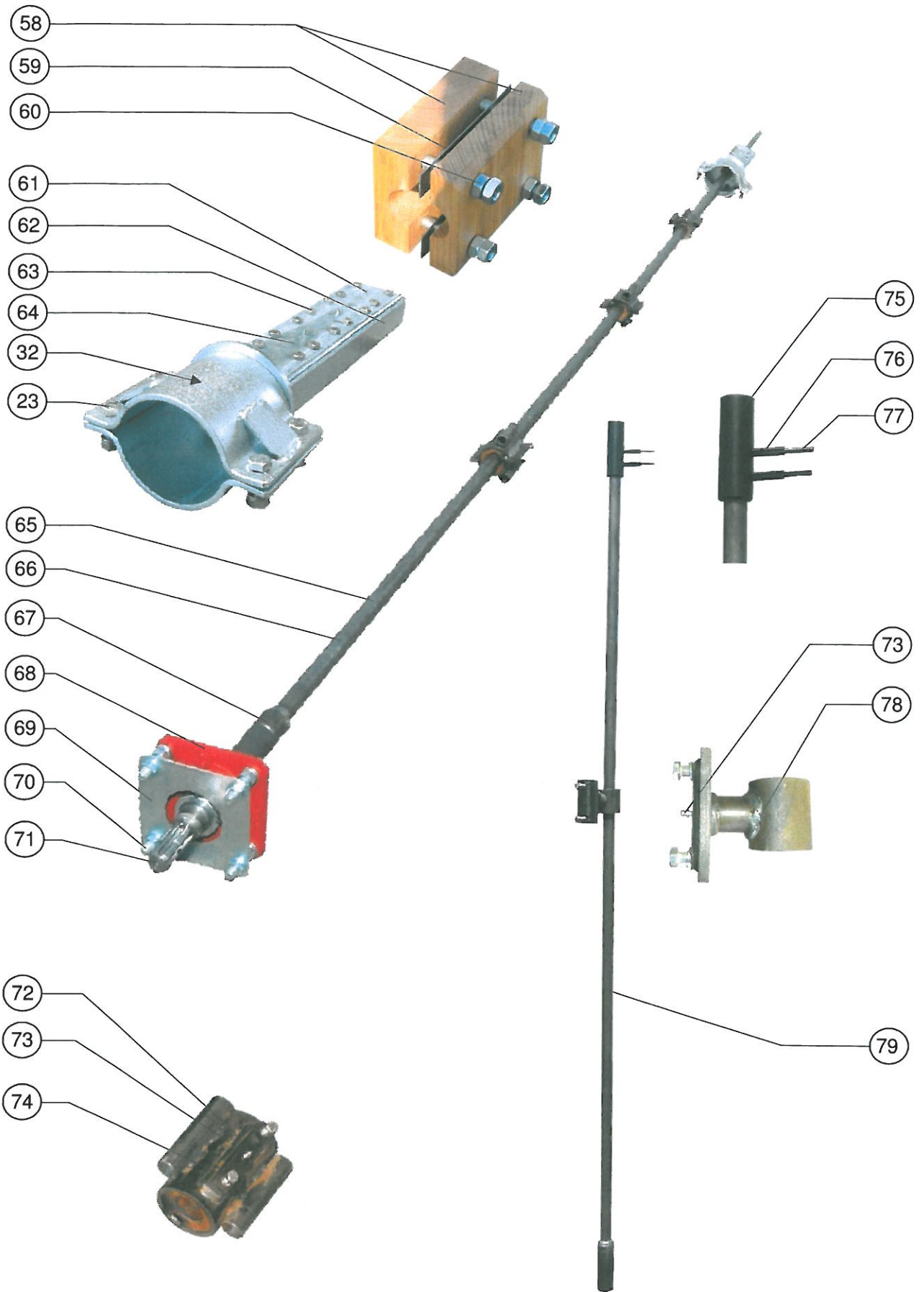
RECK-Technik GmbH & Co. KG
Reckstraße 1-4
D-88422 Betzenweiler

Telefon + 49 (0) 73 74-18 82
Telefax + 49 (0) 73 74-18 13

kontakt@reck-agrartechnik.de
www.reck-agrartechnik.de







Spare part list:

PTO tower mixer MAMMOTH

with swivelling mixing tower, height-adjustable stays, mixing rod, propeller stay, cardan shaft, platform and ladder

RECK

Agrartechnik

Type: JRE-TMD

construction year: from 2006

vw

picture No.	Description	piece each machine	part number	Reference-number	€/piece without vat ex works
1	hexagon nut M20x1,5 DIN 936 galvanized	2	0492		
2	fixture hydraulic cylinder	1	258.0.0001.00	2540	
3	hexagon nut M20x1,5 DIN 934 galvanized	1	0493		
4	platform	1	258.0.0002.00	2541	
5	chain with streight c-link, length 400mm	1	0604		
6	tower mixer-live ring	1	258.0.0003.00	2542	
7	threaded elbow joint adjustable	1	0605		
8	hexagon bolt M20x120 galvanized DIN 931	3	0496		
	with hexagon nut M20 galvanized DIN 934	2	0501		
	and washer 22 galvanized DIN 9021	2	0504		
9	linch pin ø4, doubled bent, galvanized	2	0093		
10	underframe tower mixer(height tower 2,5m)	1	258.0.0004.00	2543	
	underframe tower mixer(height tower 3,0m)	1	258.0.0005.00	2544	
	underframe tower mixer(height tower 3,5m)	1	258.0.0006.00	2545	
	underframe tower mixer(height tower 4,0m)	1	258.0.0007.00	2546	
	underframe tower mixer(height tower 4,5m)	1	258.0.0008.00	2547	
	underframe tower mixer(height tower 5,0m)	1	258.0.0009.00	2548	
11	top link pin Cat. 2/3 with linch pin	1	258.0.0010.00	2549	
12	draft link pin Cat.2/3 with linch pin	2	258.0.0011.00	2550	
13	height-adjustable stays	2	258.0.0012.00	2551	
14	ultrahigh pressure tubes 1 SN 06, on both sides HA 0408 RU 14A, length 3,0m	3	0607		
	ultrahigh pressure tubes 1 SN 06, on both sides HA 0408 RU 14A, length 4,0m	3	0608		
	ultrahigh pressure tubes 1 SN 06, on both sides HA 0408 RU 14A, length 5,0m	3	0609		
	ultrahigh pressure tubes 1 SN 06, on both sides HA 0408 RU 14A, length 6,0m	3	0610		
15	hydraulic plug size 3	3	0611		
16	dome size 3	3	0612		
17	cardan shaft Walterscheid W2400-860-SD25	1	0626		
18	hexagon bolt M16x35 galvanized DIN 931	2	0588		
	with hexagon nut M16 galvanized DIN 936	4	0098		
	with split washer A16 galvanized DIN 127	2	0023		
19	mixer rod frame attachment	1	258.0.0016.00	2555	
20 a	triangle splashboard left	1	258.0.0015.00	2554	
20 b	triangle splashboard right	1	258.0.0019.00	2558	
21	cardan shaft Walterscheid W2400-510-SD25	1	0613		
22	PTO cover 8202	1	0491		
23	hexagon bolt M16x50 galvanized DIN 933	2	0020		
	with hexagon nut M16 galvanized DIN 934	2	0024		
	and split washer A16 galvanized DIN 127	2	0023		

picture No.	Description	piece each machine	part number	Reference-number	€/piece without vat ex works
24	mixing rod JRE-E 500 complete without propeller	1	258.0.1001.00	2572	
	mixing rod JRE-E 600 complete without propeller	1	258.0.1002.00	2573	
	mixing rod JRE-E 700 complete without propeller	1	258.0.1003.00	2574	
	mixing rod JRE-E 800 complete without propeller	1	258.0.1004.00	2575	
25	mixing rod-tube JRE-E 500 (ø139,7 length tube 4m)	1	252.0.0052.00	2356	
	mixing rod-tube JRE-E 600 (ø139,7 length tube 5m)	1	252.0.0053.00	2357	
	mixing rod-tube JRE-E 700 (ø139,7 length tube 6m)	1	252.0.0054.00	2358	
	mixing rod-tube JRE-E 800 (ø139,7 length tube 7m)	1	252.0.0055.00	2359	
26	hexagon bolt M16x35 galvanized DIN 933	2	0028		
	with hexagon nut M16 galvanized DIN 934	2	0024		
27	pipe clamp half-shell 150x8 ø140mm	6	0490		
28	underframe of triangle stabilizer 3m (by 6-7m mixing rod)	1	258.0.0013.00	2552	
	underframe of triangle stabilizer 4m (by 8m mixing rod)	1	258.0.0014.00	2553	
29	ladder to the platform	1	258.0.0017.00	2556	
30	tower stay socket pin with linch pin	2	258.0.0018.00	2557	
31	hexagon bolt M16x50 V2A DIN 933	24	0489		
	with hexagon nut M16 V2A DIN 934	24	0486		
	and split washer A16 V2A DIN 127	24	0488		
32	double wooden bearing "JUMBO" complete	1	258.0.1006.00	2577	
33	hexagon bolt M12x25 10.9 galvanized DIN 933	6	0429		
	with hexagon nut M12 galvanized DIN 936	6	0036		
34	set collar	1	250.0.890.036	2036	
35	high efficiency propeller ø500mm	1	250.0.990.042	2042	
36	propeller stay long complete JRE-PS	1	258.0.1005.00	2576	
37	propeller stay tube	1	252.0.0062.00	2494	
38	locking screw M12x40 galvanized DIN 933	8	0627		
	with hexagon bolt M12 galvanized DIN 934	8	0036		
39	stop pin	1	0614		
40	hexagon bolt M12x40 galvanized DIN 933	14	0107		
	with hexagon nut M12 galvanized DIN 934	14	0018		
41	hydraulic cylinder Z-70-30-600-910 double action, with locking pin and pressure control valve	1	0615		
42	hexagon bolt M16x80 galvanized DIN 931	2	0160		
	with hexagon nut M 16 galvanized DIN 936	4	0098		
43	locking bar	2	258.0.0020.00	2559	
44	locking bar-with safety loop and linch pin	2	258.0.0021.00	2560	
45	bandage complete	1	258.0.0022.00	2561	
46	hexagon bolt M12x20 galvanized DIN 933	4	0537		
	with tooth lock washer J13 galvanized DIN 6797	4	0518		
	and linch pin A12 galvanized DIN 127	4	0030		
47	gear box bleeder valve 3/8"	2	0616		
48	tube bend 3/8"	2	0617		
49	gear box holder, short	2	258.0.0023.00	2562	
50	hexagon bolt M16x30 galvanized DIN 933	4	0458		
	with linch pin A 16 galvanized DIN 127	4	0023		
51	angle transmission R 105	2	0618		
52	gear box holder, long	2	258.0.0024.00	2563	

pict ure No.	Description	piece each machine	part number	Reference- number	€/piece without vat ex works
53	locking piston bolt M12x40 galvanized DIN 933	8	258.0.0034.00	2579	
	with hexagon bolt M12 galvanized DIN 985	8	0398		
	and linch pin A12 galvanized DIN 127	8	0030		
54	hexagon bolt M10x20 galvanized DIN 933	4	0125		
	with linch pin A 10 galvanized DIN 127	4	0011		
55	cover plastic PVC yellow	2	0619		
56	instructions for use with protective covering	1	0620		
57	PTO cover	2	0232		
58	half wooden bearing (pair) complete	4	258.0.0033.00	2578	
59	distance plate	8	250.770.007	2007	
60	hexagon bolt M10x80 V2A DIN 931	12	0621		
	with hexagon nut M10 V2A DIN 934	24	0500		
61	hydraulic-type lubricating nipple M6x1-H1	4	0016		
62	double wooden-bearing case "JUMBO"	1	252.0.0033.00	2337	
63	hexagon bolt M10x90 V2A DIN 931	4	0549		
	with hexagon nut M10 V2A DIN 934	4	0500		
64	wooden-bearing metal cover	1	252.900.003	2307	
65	mixer shaft "JUMBO" complete 5m	1	250.0.1016.00	2067	
	mixer shaft "JUMBO" complete 6m		250.0.1017.00	2068	
	mixer shaft "JUMBO" complete 7m		250.0.1018.00	2069	
	mixer shaft "JUMBO" complete 8m		250.0.1019.00	2070	
66	mixer shaft "JUMBO" without pto driven and sleeve, length 5,0m	1	250.0.0044.00	2044	
	mixer shaft "JUMBO" without pto driven and sleeve, length 6,0m		250.0.0045.00	2045	
	mixer shaft "JUMBO" without pto driven and sleeve, length 7,0m		250.0.0046.00	2046	
	mixer shaft "JUMBO" without pto driven and sleeve, length 8,0m		250.0.0047.00	2047	
67	sleeve to weld together pto driven and mixer shaft	1	250.0.0048.00	2049	
68	ball bearing with adapter sleeve	1	0484		
69	plate axial, big	1	252.0.0032.00	2336	
70	hexagon bolt M16x90 galvanized DIN 931	4	0505		
	with hexagon nut M16 galvanized DIN 934	4	0024		
	and linch pin A16 galvanized DIN 127	4	0023		
71	pto driven 1 3/8", 6Z, DIN 9611 A	1	250.0.0049.00	2049	
72	middle wooden bearing (pipe) "JUMBO"	2/3/4	252.0.0034.00	2338	
73	hydraulic-type lubricating nipple ø6-H1A DIN 71412 galvanized	3/5/7	0624		
74	hexagon bolt M8x16 V2A DIN 933 (JRE-E 500)	4/6/8	0625		
	with linch pin A8 V2A DIN 127 (JRE-E 500)	4/6/8	0551		
75	profile sleeve on top 130mm	2	258.0.0031.00	2570	
76	dowel pint 12x50 DIN 1481	2	0622		
77	dowel pint 7x50 DIN 1481	2	0623		
78	mixing tower middle bearing	1/2	258.0.0032.00	2571	
79	mixing tower shaft with profile sleeve (height tower 2,5m)	1	258.0.0025.00	2564	
	mixing tower shaft with profile sleeve (height tower 3,0m)	1	258.0.0026.00	2565	
	mixing tower shaft with profile sleeve (height tower 3,5m)	1	258.0.0027.00	2566	
	mixing tower shaft with profile sleeve (height tower 4,0m)	1	258.0.0028.00	2567	
	mixing tower shaft with profile sleeve (height tower 4,5m)	1	258.0.0029.00	2568	
	mixing tower shaft with profile sleeve (height tower 5,0m)	1	258.0.0030.00	2569	